

KNOWLEDGE HUB

BULLETIN 37



English

Français

March 2026



Sustainability Report

Sustainability remains a challenge in Canada's efforts to address gender-based and family violence (GBFV). The "Advancing trauma- and violence-informed responses to gender-based and family violence: An exploration of sustainability" report, authored by members of the Knowledge Hub team, examines sustainability across two cycles of a Public Health Agency of Canada (PHAC) investment: the 2015–2022 *Supporting the victims of domestic violence and child abuse through community programs* cycle and the 2022–2026 *Preventing and addressing family violence: The health perspective* cycle. Our analysis draws from multiple data sources, including final reports from completed projects from the 2015–2022 funding cycle, interviews with project leaders from the 2015–2022 cycle three to four years after the end of funding, meeting notes and transcripts from sustainability Working Group meetings with representatives from the 2022–2026 cycle, and presentations about sustainability delivered by representatives from the 2022–2026 cycle. We explore the sustainability of these funded programs across four sustainability domains—

1. sustained outcomes for program clients;
2. sustained implementation of program (components);
3. sustained knowledge and skills for program staff and professionals;
4. sustained relationships, collaboration, and capacity for organizations;

—which all require stable sources of funding. These domains might be useful to future researchers and program leaders seeking to plan for and assess the sustainability of GBFV and other health-related programs. We also make recommendations for PHAC and other funders related to fostering systemic change towards sustainable funding of effective public health initiatives and to working within current funding systems.

The following pages offer a Wrapped summary of the activities of the Knowledge Hub over the past four years.



2022–2026 Trauma- and Violence-Informed Community of Practice

WRAPPED

A wrap-up of our Community of Practice's activities and impact across four years

Supporting Collaboration and Collective Impact in the Gender-Based and Family Violence Sector

From 2022 to 2026, the Knowledge Hub at the Centre for Research & Education on Violence against Women & Children (Western University) facilitated its second national Community of Practice (CoP) funded by the Public Health Agency of Canada's "Preventing and addressing family violence: The public health perspective" investment.

The CoP included:

48

researchers and practitioners from

24

projects working in trauma- and violence-informed gender-based and family violence (GBFV) prevention across Canada

2022 | 2023 | 2024 | 2025 | 2026



The 24 Projects:

- [ARMCAR](#) | [Art et contes en famille](#) | [BOW](#) | [c-BTC](#) | [Changing Contexts](#) | [COMPASS](#) | [ConnectED Parents](#) | [Cross-Sectoral Solutions](#) | [Effets de l'initiative Espace Parents sur les immigrants](#) | [Fostering Violence Prevention and Well-Being for Black Women, Families and Communities](#) | [HEAL](#) | [iHEAL](#) | [Kaskinomatasowin](#) | [Kids' Club and Mom's Empowerment](#) | [MODELSS](#) | [Projet STEP](#) | [RISE](#) | [Safety and Repair](#) | [Sharing in the Healing Journey](#) | [Stories of Strength](#) | [Strong Women](#) | [The AIM Study](#) | [Trauma- and Violence-Informed Movement](#) | [Yukon First Nations Violence Prevention](#)

Community of Practice Reach

National Scope and Shared Learning

The CoP offered opportunities for learning and collaboration among projects responding to GBFV in diverse regional and community contexts.

- 14** bilingual KH Presents webinars
- 6** co-created resources
- 1** bilingual national conference with **370** registrants

Through these and other activities, the CoP extended its reach beyond its core members, engaging practitioners, researchers, and decision-makers across Canada. It strengthened national awareness and uptake of trauma- and violence-informed approaches.

36,500+
mailing list subscribers

175,000+
website visits

58
LN and KH webinars

14
KH Presents webinars

2,303
live webinar attendees for KH Presents webinars

2,695
recorded webinar views of KH Presents webinars

From Prevention to Intervention

Impact Across the Lifespan

CoP projects addressed GBFV across the continuum, from prevention and early intervention to response and recovery, supporting individuals and families across the lifespan, and providing training and skill development for GBFV workers.

Projects in the CoP have reported:

- Improvements in participants' knowledge, skills, & wellbeing
- Increased participant safety strategies
- Reduced conflict and violence severity among participants
- Organizational and culture change
- Strengthened system-level understanding of trauma- and violence-informed practice

Inclusivity

Equity, Diversity, and Accessibility

Projects engaged culturally, linguistically, and geographically diverse communities across Canada, supported by bilingual (English/French) knowledge exchange and trauma- and violence-informed facilitation by the Knowledge Hub team.

Together, these efforts supported more equitable and culturally responsive approaches across Canada.

Collaboration

Collective Learning and Capacity-Building

Through quarterly virtual meetings, annual in-person gatherings, and ongoing knowledge exchange, the CoP fostered strong relationships and shared learning.

Of those CoP members who participated in an evaluation survey about their participation in the CoP:

81% reported increased knowledge

75% reported strengthened relationships

69% reported tangible benefits for practice

Participation also strengthened research capacity, program delivery, and trauma- and violence-informed practice.

Sustainability

Endurance Beyond the Investment

CoP members developed lasting relationships, shared language, and collective capacity.

- A repository of projects and co-created resources is maintained by the Knowledge Hub
- New collaborations and partnerships continue to be developed

The lessons, tools, and partnerships developed through the CoP will continue to shape practice across the country.

Action

Collective Momentum Forward

The CoP demonstrated the value of collective action in advancing trauma- and violence-informed approaches to GBFV prevention.

Shared learning and action strengthened calls for sustained funding, cross-sector collaboration, and continued national leadership, leaving a legacy that will continue to shape practice and policy.

Knowledge Hub Team:

Anna-Lee Straatman, Project Manager
Jessica Webb, Implementation Coordinator
Katreena Scott, Academic Director
Linda Mavura, Implementation Coordinator
Mara Di Persio, Media Technician
Nicole Jeffrey, Postdoctoral Associate
Sabry Adel Saadi, Implementation Coordinator, Francophone Liaison



Updates from Community of Practice Members

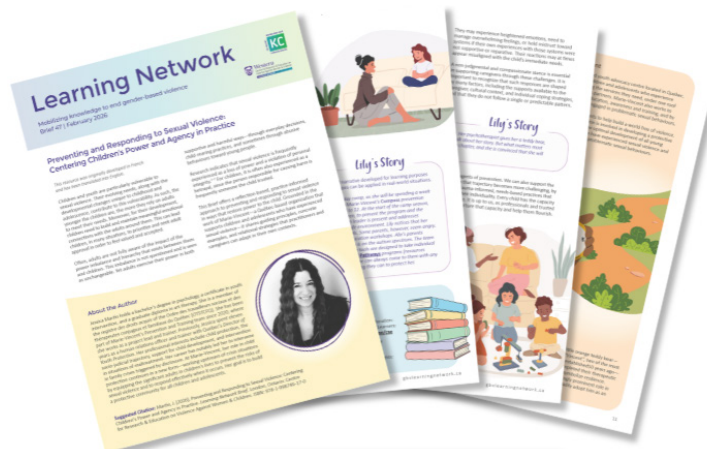
HEAL project launches new website

Access Alliance and the HEAL project have launched a new website: [Access Alliance Arts for Family Health](#). This digital platform has been created to serve as a central source for practitioners, management, researchers, and academics seeking to integrate or learn more about arts-based mental health interventions. Christen Kong offered a tour of the website in a recent KH Presents webinar. To learn more, access the recording: [Knowledge Hub Presents - January 21, 2026](#).



Compass project collaborates with Learning Network and Knowledge Hub on resource related to child sexual abuse prevention

Jessica Martin from Marie Vincent collaborated with the Learning Network and Knowledge Hub to produce a new resource: [Prevention and Response in the Context of Sexual Violence: Centering Children's Power and Agency in Practice](#). "This brief offers a reflection-based, practice-informed approach to preventing and responding to sexual violence in ways that restore power to the child." It shares guiding principles, concrete examples, and relational strategies that caregivers and practitioners can adapt in their own contexts.



[READ MORE](#)



Mary Motz speaks on Ontario Today

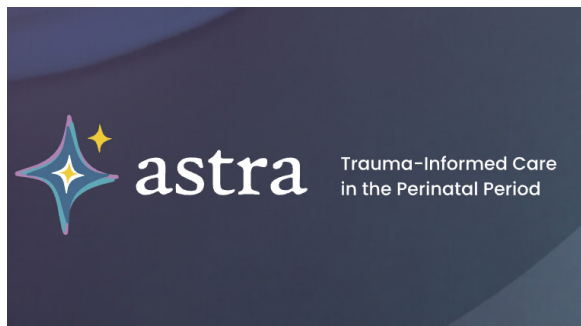
On November 27, 2025, Mary Motz was a guest on Ontario Today on CBC Radio and spoke about “Generational family dysfunction: What does it take to be a cycle breaker?”

[HEAR MORE!](#)



The STEP project launches online ASTRA training program

“ASTRA” is the only training course in French to address trauma-informed approaches during perinatal care for people who have experienced childhood interpersonal trauma. The program is completely online, asynchronous, and takes about 4 hours to complete.



[READ MORE](#)



[READ MORE](#)



Kara Brisson-Boivin interview with CBC

Congratulations to our Community of Practice member, Kara Brisson-Boivin, on her recent appearance on CBC News Network, speaking with Aarti Pole about growing concerns surrounding AI-powered toys.

As emerging technologies move faster than regulatory and protective frameworks, this conversation highlights the urgent need for critical reflection on privacy, children's safety, and the broader social implications of so-called "smart" technologies.

Thank you, Kara, for contributing to this important public dialogue and for continuing to advance thoughtful, ethical, and youth-centred perspectives in digital policy discussions.



[VIEW VIDEO](#)



Knowledge Hub to facilitate new Community of Practice for projects addressing child maltreatment

The Knowledge Hub at the Centre for Research & Education on Violence against Women & Children (Western University) has been awarded funding from the Public Health Agency of Canada to facilitate a new CoP with projects preventing and addressing child maltreatment. This new CoP will work with 26 projects across Canada between 2026 and 2031.

Congratulations!

KNOWLEDGE HUB TEAM

Anna-Lee Straatman, Project Manager, astraat2@uwo.ca
Jessica Webb, Implementation Coordinator, jwebb63@uwo.ca
Katreena Scott, Academic Director, kscot47@uwo.ca
Linda Mavura, Implementation Coordinator, lmavura@uwo.ca
Mara Di Persio, Media Technician, nli293@uwo.ca
Nicole Jeffrey, Postdoctoral Associate, njeffre4@uwo.ca
Sabry Adel Saadi, Implementation Coordinator, Francophone
Liaison, ssaadi2@uwo.ca

CHECK US OUT ON SOCIAL MEDIA

Facebook: facebook.com/LNandKH
LinkedIn: linkedin.com/company/ln-and-kh/
X: x.com/lnandkh
Website: <http://kh-cdc.com/>



Financial contribution from



Public Health
Agency of Canada

Agence de la santé
publique du Canada